

"restoring, life, career and dignity"

Beneficent 
positive solution architects

Beneficent

A career coaching and redeployment specialist organisation that works with employers and individuals to determine the best way forward to achieve career goals that are the best fit for all parties.

EMPLOYMENT MATCHING ASSESSMENT

this task is best completed by
redeployment specialists

**A service that reviews
a worker's capacity,
transferable skills and
potential employment
options against their
pre-injury employer's
job database to
determine if a
successful match
exists**

Locations

283-287 Sir Donald Bradman Drive Brooklyn Park
SA 5032

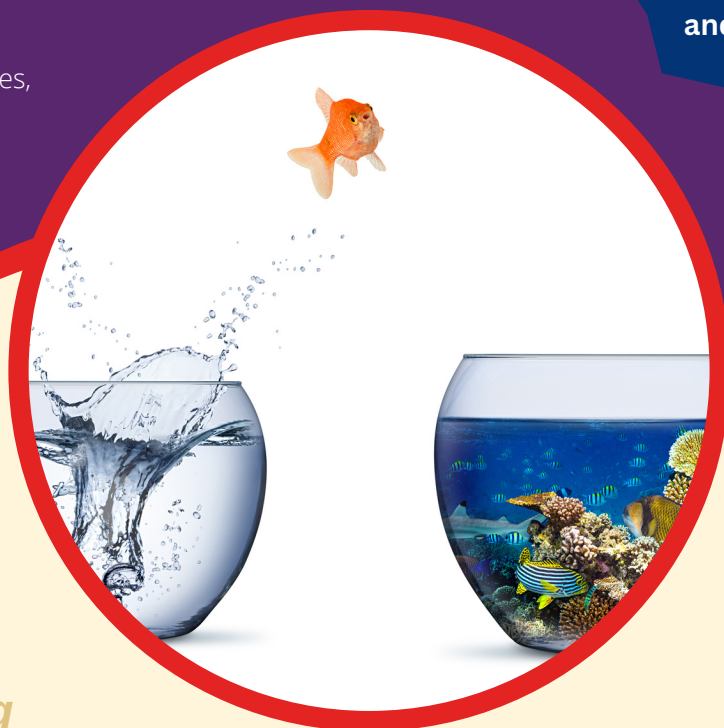
Room 3, West Wing
Innovation House, Mawson Lakes Blvd, Mawson Lakes,
SA 5095

The Convent
Room 12A
20 Penola Road, Mt Gambier, SA 5290

Stretton House
307 Peachy Rd, Munno Para, SA 5115

Remote servicing via Zoom
also available

We offer local
services at
Victor Harbor
and Wallaroo



This service has the following components:

Capacity

A client's physical and psychological capacity is ascertained to ensure the full extent of their abilities is clear

Transferable skills

A thorough analysis of the clients workplace skills, education, interests, accreditation, licensing, retraining ability and police history is completed

Employment opportunities

The full range of employment opportunities with the employer are examined, across all locations relevant to the clients scope of travel. A detailed assessment of skill prerequisites and qualification and accreditation requirements is completed as part of this analysis

Employment Matching

An analysis of the clients transferable skills and capacity against relevant employment opportunities is completed to ascertain if a viable match exists

Report and feedback

A detailed report, outlining the information obtained, along with recommendations is provided. A feedback meeting is held as required

Ask for a quote if you are interested in this service